



HerdMASTER 6 Development and Roadmap Update

Q4 2026

What is HerdMASTER 6?

HerdMASTER 6 is the next chapter of HerdMASTER. We have heard our customers, and HerdMASTER 6 is rebuilt from the ground up on ABRI's BreedLOGIC platform, designed around how producers actually work today.

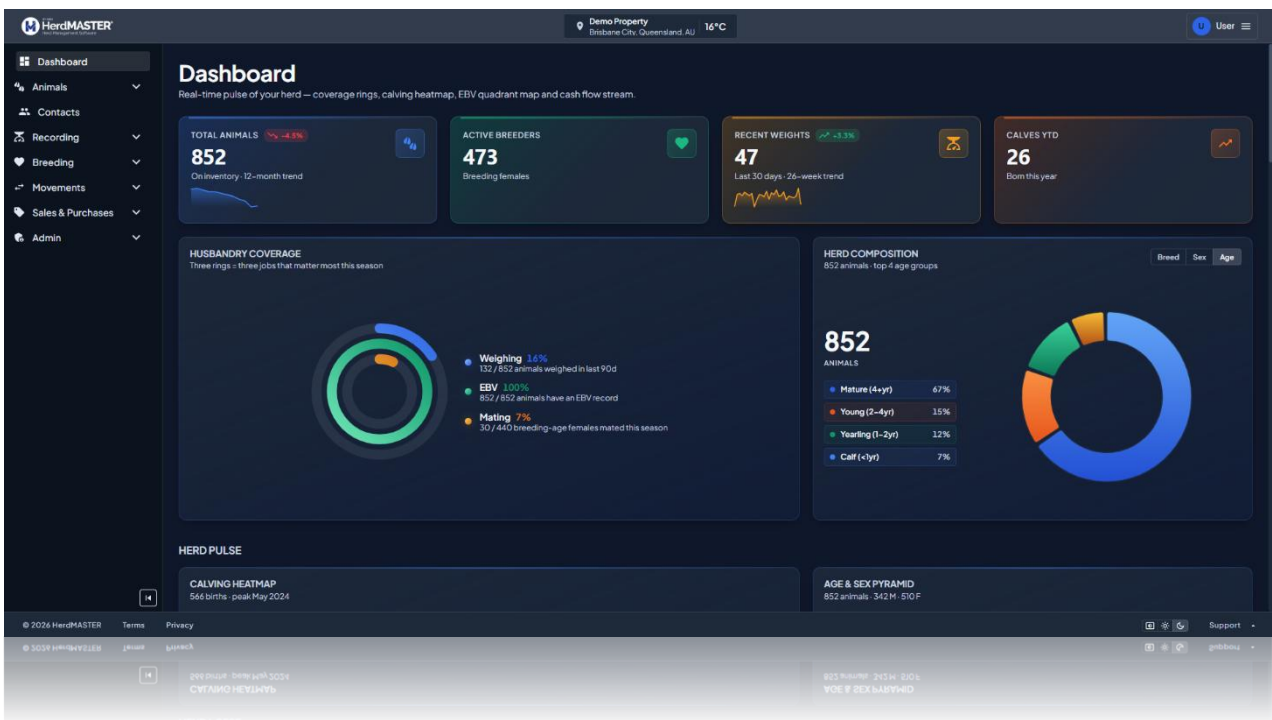
After two decades, HerdMASTER 6 brings your herd recording into the modern web, with the productivity, security, and ease-of-use you'd expect from the software you use every day.



Same trusted recording. Modern experience. Built on the same BreedLOGIC platform breed societies are already using, so your data, exports, and submissions are all part of one connected system.

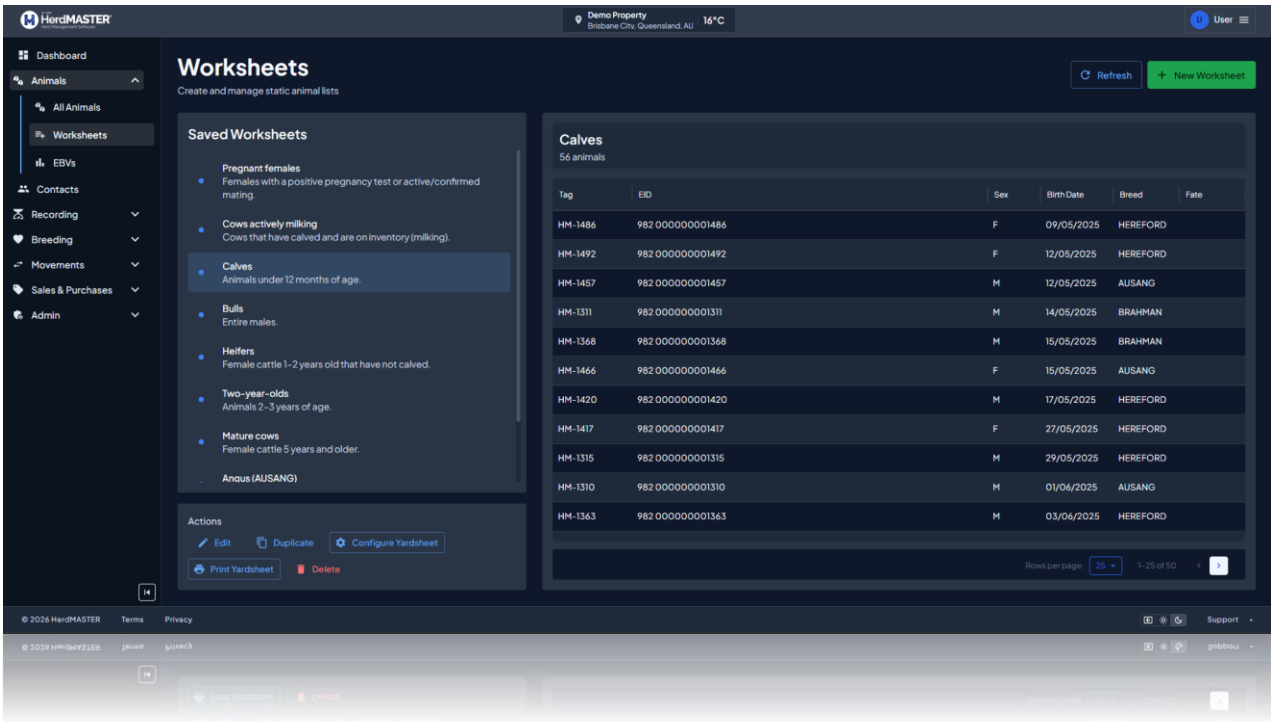
A modern experience

HerdMASTER 6 runs in your browser. There is nothing to install, nothing to update, and nothing to break when you change machines. Open a tab, log in, and you are working — from the office, the laptop in your vehicle, or the phone at the yards.



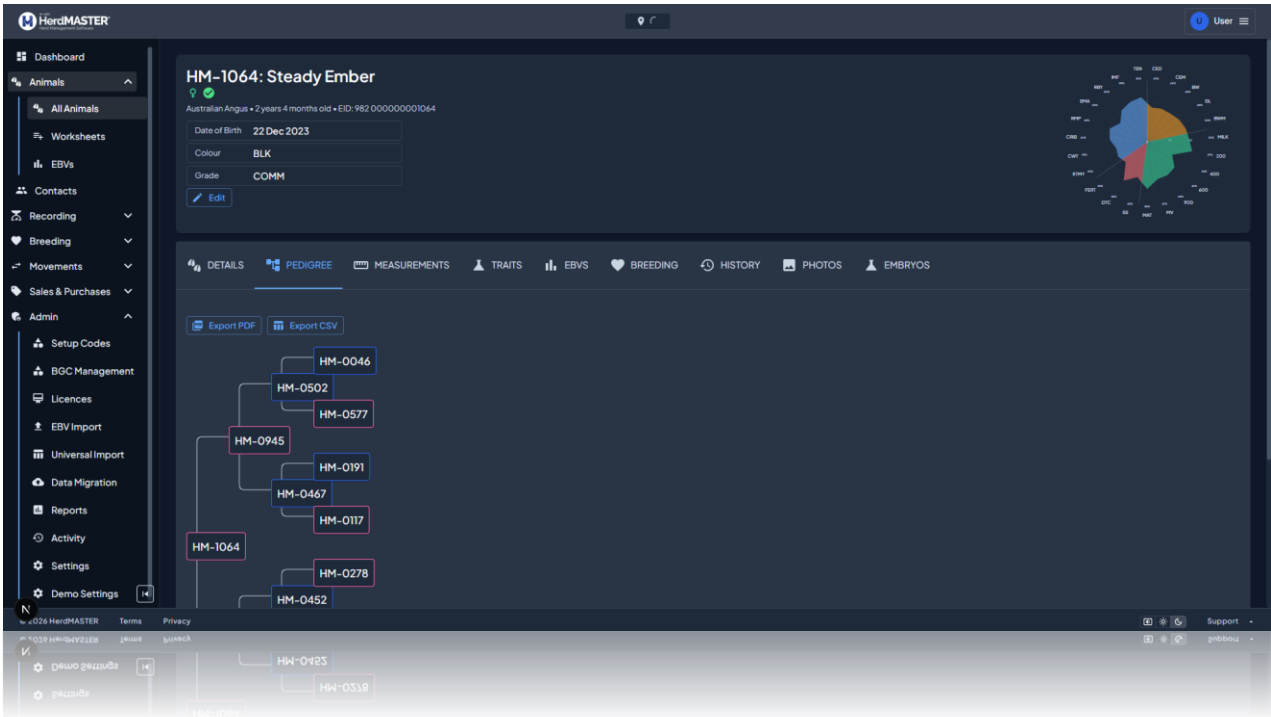
A real-time view of your herd

The dashboard gives you the live pulse of your operation, from total animals and active breeders to recent weights and calves year-to-date. Husbandry coverage, herd composition, and the calving heatmap are all front and centre.



Worksheets that work how you do

Build saved worksheets for any group of animals — cows actively milking, management groups, heifers, breed-specific lists. Edit, duplicate, configure yardsheets, or print on demand.



Moving across is free

Your existing HerdMASTER licence carries across to HerdMASTER 6 at no additional cost. We are honouring the licence you already hold for its full duration. There is no upgrade fee, no migration fee, and no price increase.

Going forward, your subscription cost stays the same. You are not paying more for the new platform.

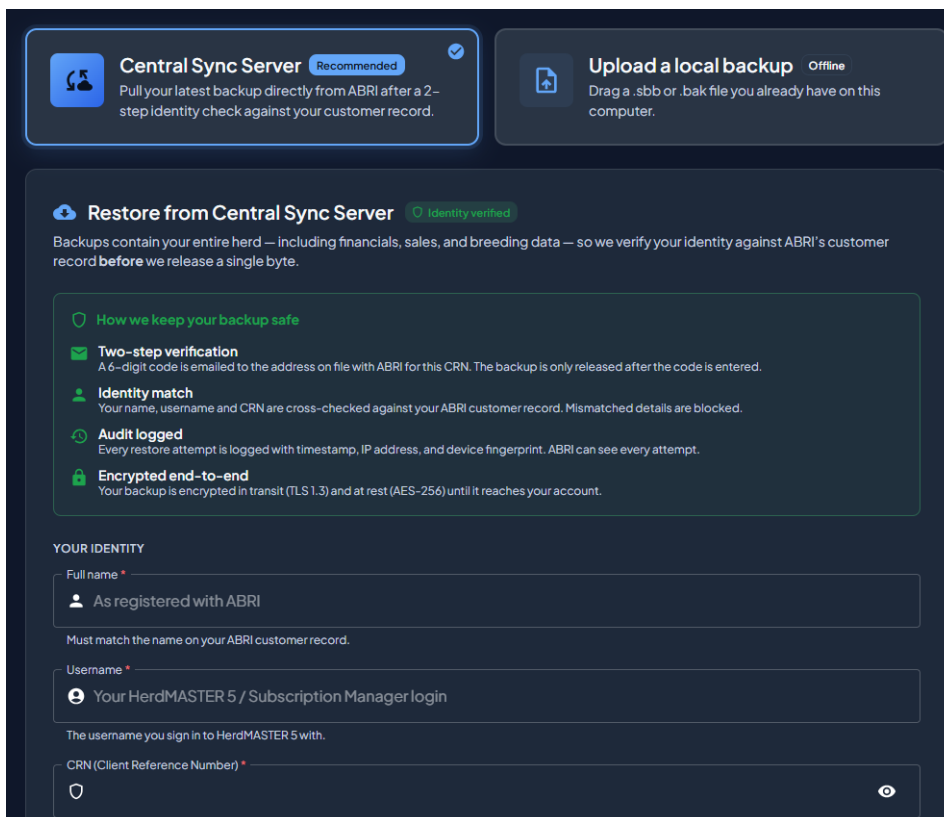
Bringing your data across is straightforward

If you currently sync your HerdMASTER data to the ABRI server, your records can be brought directly into HerdMASTER 6. No exports, no manual steps on your end.

If you keep your data locally, you will be able to upload your HerdMASTER file. Either way, you start in HerdMASTER 6 with your full history intact.

One login, all your breeds

If you record across multiple breeds or societies, you no longer juggle separate logins. Sign in once and see everything you have access to. Manage your licence, billing details, and account information directly from your profile page.



The screenshot displays the HerdMASTER 6 interface with the following elements:

- Central Sync Server** (Recommended): Pull your latest backup directly from ABRI after a 2-step identity check against your customer record.
- Upload a local backup** (Offline): Drag a .sbb or .bak file you already have on this computer.
- Restore from Central Sync Server** (Identity verified): Backups contain your entire herd — including financials, sales, and breeding data — so we verify your identity against ABRI's customer record before we release a single byte.
- How we keep your backup safe**:
 - Two-step verification**: A 6-digit code is emailed to the address on file with ABRI for this CRN. The backup is only released after the code is entered.
 - Identity match**: Your name, username and CRN are cross-checked against your ABRI customer record. Mismatched details are blocked.
 - Audit logged**: Every restore attempt is logged with timestamp, IP address, and device fingerprint. ABRI can see every attempt.
 - Encrypted end-to-end**: Your backup is encrypted in transit (TLS 1.3) and at rest (AES-256) until it reaches your account.
- YOUR IDENTITY** section with input fields:
 - Full name ***: As registered with ABRI. Must match the name on your ABRI customer record.
 - Username ***: Your HerdMASTER 5 / Subscription Manager login. The username you sign in to HerdMASTER 5 with.
 - CRN (Client Reference Number) ***: [Empty field]

Where we are and what comes next

HerdMASTER 6 is rolling out from Q4 2026. We are taking a phased approach, working with our users directly to make sure the move across is smooth and that any questions get answered properly.

If you would like to be among the first to move across, register your interest now and we will be in touch as your region comes online.

Register your interest

We are rolling HerdMASTER 6 out in stages from Q4 2026. Register your interest now to:

- Be among the first to move across
- Get early access to onboarding resources
- Hear directly from us as the rollout approaches

Contact Us

ABRI and LRF are committed to consistent, transparent communication around HerdMASTER 6 development. This pack is part of that effort, and we look forward to continuing the conversation as the platform evolves.

Should you have any questions about HerdMASTER, please contact:



Jeanine Labuschagne

+27 81 844 4853

jeanine@lrf.co.za