

NOVEMBER 2023

LRF NEWS



SEASON'S GREETINGS!

The LRF offices will be closed from the 14th December - 3rd January 2024
Enjoy the festivities!



Micah Forsythe



Phillipine Sithole

LRF NEWS

We are thrilled to announce the latest additions to our team, two exceptional individuals who bring a wealth of knowledge and expertise to our organisation. Join us in welcoming Micah Forsythe and Phillipine Sithole, who have both been appointed as Technical Assistants.

Micah Forsythe's Background:

Micah graduated with honors in 2022, earning her Bachelor of Science in Agricultural Animal Science from the esteemed University of Pretoria. We are pleased to share that Micah is currently pursuing her Master of Science in Animal Breeding and Genetics at the same institution.

Phillipine Sithole's Background:

Phillipine graduated in 2019, earning her Bachelor of Science in Animal Production from the esteemed University of Limpopo. We are pleased to share that Phillipine is currently pursuing her Master of Science in Animal Breeding and Genetics at the University of Pretoria.

IN THIS ISSUE

In this issue, catch up on a whirlwind month at our organisation! Delve into our latest news, and highlights. Get the scoop on upcoming dates. Join us as we celebrate progress, innovation, and collaboration within our vibrant community.

LRF NEWS

[Read More - Page 1-2](#)

CALENDAR

[Read More - Page 2](#)

HERDMASTER/ BREEDPLAN NEWS

[Read More - Page 2](#)

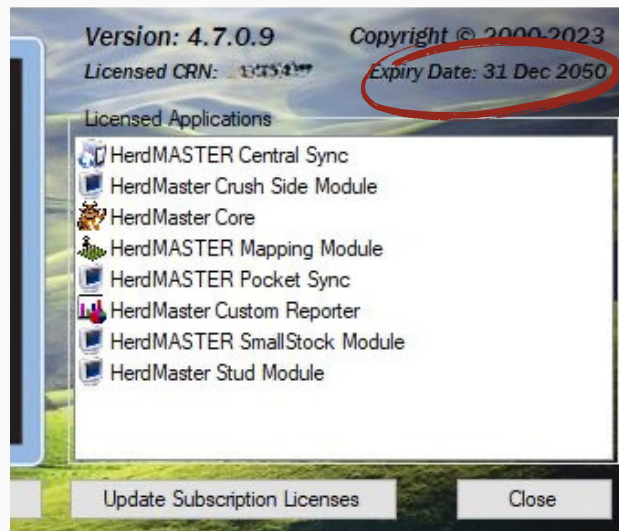
HerdMASTER Important Notice

As we approach the upcoming office shutdown, we want to remind all HerdMASTER users to verify the status of their licenses. If your license is set to expire during this period, please take a moment to ensure it is up to date to avoid any disruptions. You can easily check your license expiry date by clicking on Help | About, where the expiration date will be displayed in the top right corner.

During the official shutdown, our team will be responding to emails on an adhoc basis. For any support queries or assistance needed, please direct your emails to jeanine@lrf.co.za. We appreciate your attention to this matter and thank you for your cooperation.

Soos ons die komende kantoorluiting nader, wil ons alle HerdMASTER-gebruikers herinner om die status van hul lisensies te verifieer. Indien jou lisensie gedurende hierdie tyd verval maak asseblief seker dit is op datum. Jy kan maklik jou lisensie se vervaldatum nagaan deur op Help | About te klik, waar die vervaldatum in die regter boonste hoek vertoon sal word.

Tydens die amptelike kantoorluiting sal ons span op 'n adhoc-basis op e-posse reageer. Vir enige ondersteuningsnavrae, rig asseblief jou e-pos aan jeanine@lrf.co.za. Baie dankie vir u samewerking in hierdie verband.



CALENDAR

December

14 - LRF office closes

January 2024

3 - LRF office opens

HerdMASTER/BREEDPLAN NEWS

On Thursday 16 November, the LRF attended the ABRI first Q&A Forum to discuss the highly anticipated new Breed Registry Software (codenamed ILRNext) that will be replacing the ILR suite of products (ILR2, Internet Solutions and IRLOnline). The forum was conducted with clients in the USA, Canada, Australia, New Zealand, South Africa, and the United Kingdom.

The meeting encapsulated the ABRI workshop held in Armadale, Australia with approximately 25 participants from global societies, breeders, and ABRI representatives. The focus was on introducing their upcoming product, code-named "ILR next," designed to address current challenges in breeding decisions. The workshop highlighted the importance of leveraging rich datasets globally, including DNA, animal, and herd data, with an emphasis on user-friendly data visualization. ABRI initiated an early adopter program, encouraging user feedback through workshops to validate screens and designs before the mid-next year release. Development is underway, with testing using dummy data planned for Q1 next year, and a flexible migration timeline based on society needs. The ILRNext transition, set for mid to late next year, will involve an ongoing testing process. The pricing structure remains consistent with ILR 2, and the transition approach is directed by individual societies, with smaller breed societies potentially joining first. The meeting underscores ABRI's commitment to collaborative development, user engagement, and adapting the ILR next product to meet the specific needs of breed societies and members.

In addition, the meeting also introduced the development of a dedicated app for ILR next. This app is designed to streamline basic data recording and facilitate easy access to animal information in the field, further enhancing the user experience for breeders.